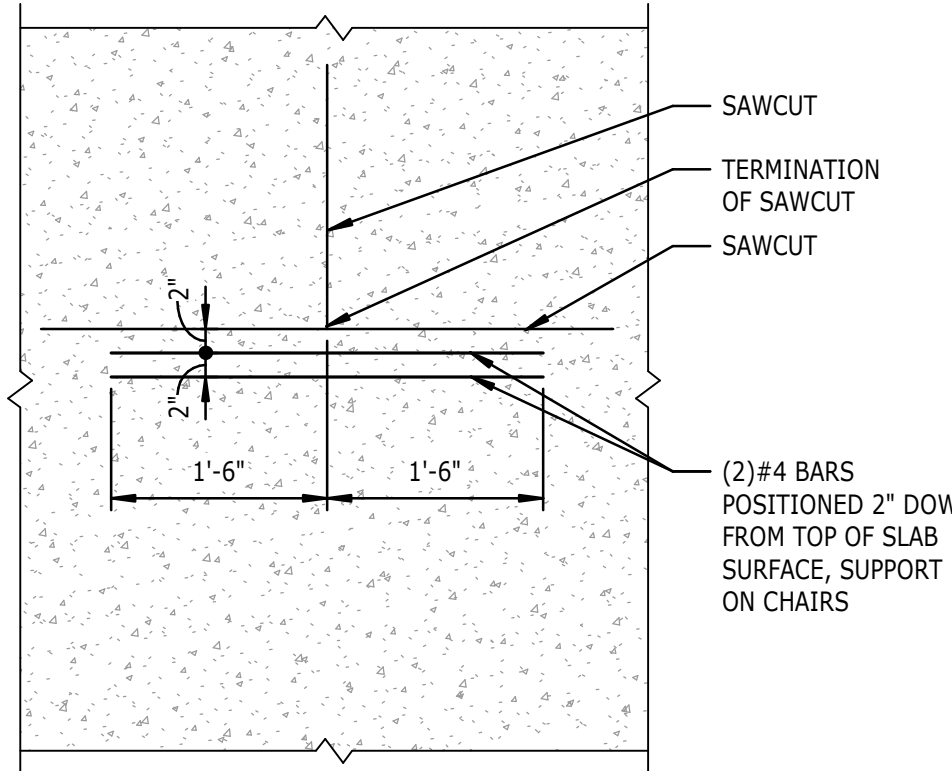


CONCRETE REINFORCING SPLICES			
BAR SIZE	f _c = 3,000 PSI	f _c = 4,000 PSI	f _c = 5,000 PSI
#3	1'-10"	1'-7"	1'-5"
#4	2'-4"	2'-1"	1'-10"
#5	3'-0"	2'-7"	2'-4"
#6	3'-7"	3'-1"	2'-9"
#7	5'-2"	4'-6"	4'-1"
#8	5'-11"	5'-2"	4'-8"
#9	6'-6"	5'-10"	5'-3"
#10	7'-6"	6'-6"	5'-10"
#11	8'-4"	7'-3"	6'-6"

- NOTES:
1. FOR CLASS B LAP SPlice, SPlice LENGTH = 1.3 x DEVELOPMENT LENGTH.
 2. APPLIES TO BOTTOM BARS ONLY (LESS THAN 12" OF FRESH CONCRETE BELOW BAR).
 3. APPLIES WHERE THE CLEAR COVER IS GREATER THAN THE BAR DIAMETER.
 4. WHEN MORE THAN 12" OF FRESH CONCRETE BELOW SPlice, THEN INCREASE SPlice TO 1.3 x SPlice LENGTH.

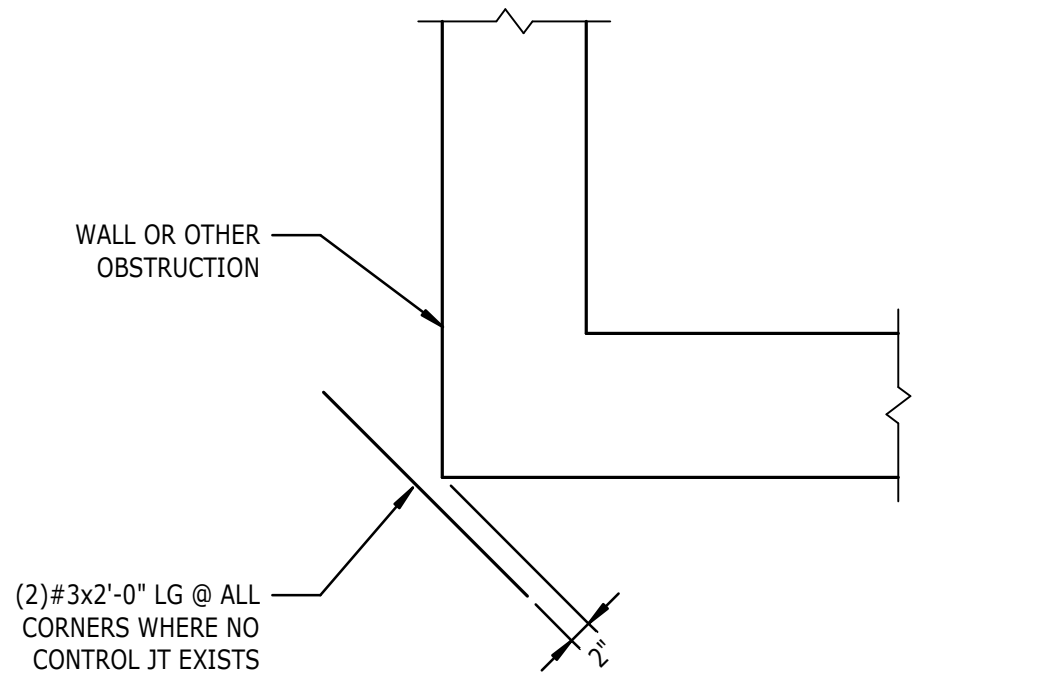
17 CONCRETE REINFORCING SPlice SCHEDULE

S301 3/4" = 1'-0"



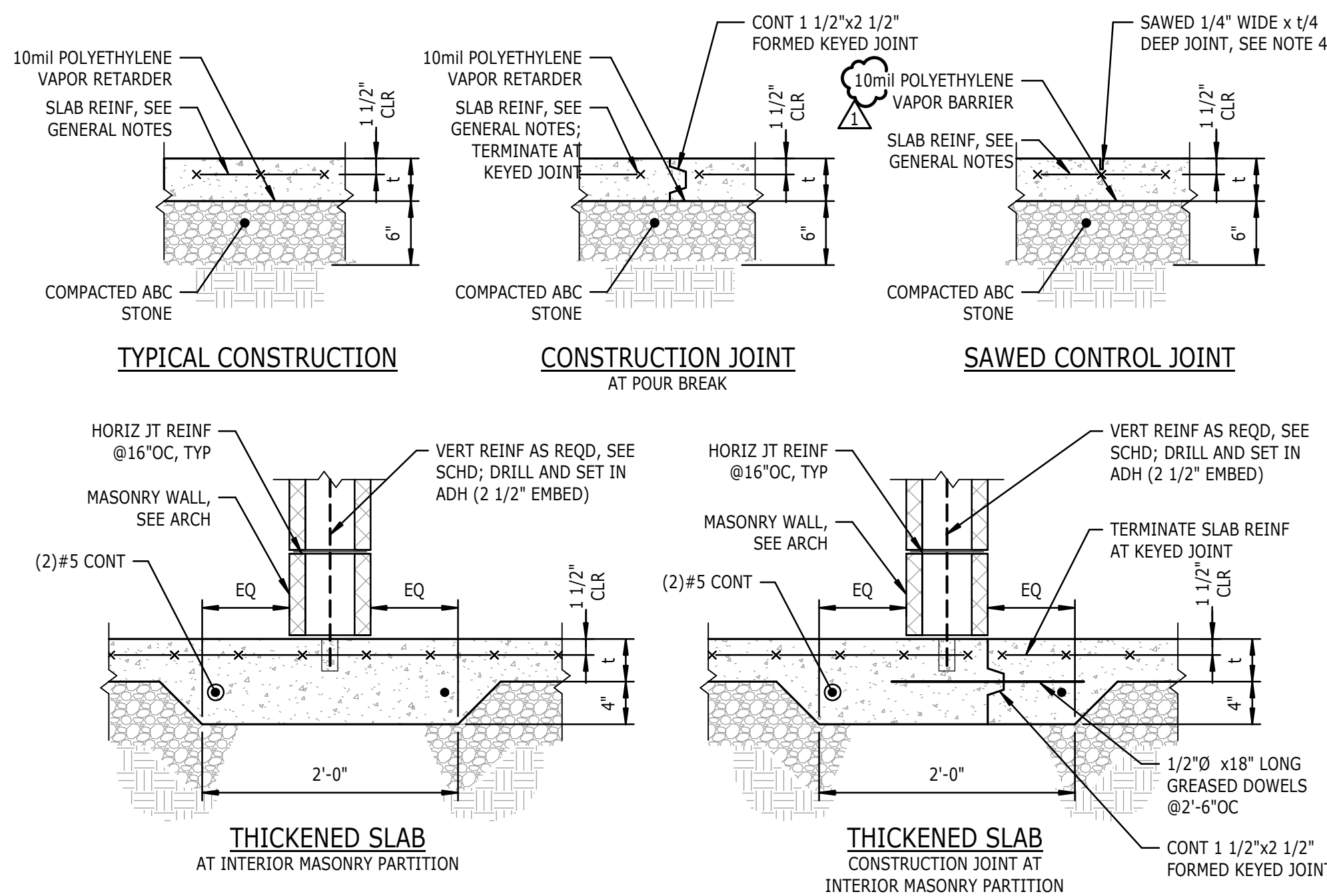
13 TYPICAL AT CONTROL JOINT TERMINATION

S301 3/4" = 1'-0"



9 TYPICAL SLAB AT CORNERS

S301 3/4" = 1'-0"



- NOTES:
1. "t" DENOTES SLAB THICKNESS, SEE PLANS.
 2. LOCATION OF SLAB ON GRADE CONSTRUCTION JOINTS SHALL BE DETERMINED BY THE CONTRACTOR. JOINT LOCATIONS SHALL BE SUBMITTED TO THE ENGINEER FOR APPROVAL PRIOR TO CONSTRUCTION.
 3. SEE PLANS FOR LOCATION OF CONTROL JOINTS. WHERE NOT SHOWN ON PLAN, CONTACT THE ENGINEER.
 4. SAW CUT CONTROL JOINTS WITHIN 8 HOURS OF SLAB POUR.

1 TYPICAL SLAB ON GRADE

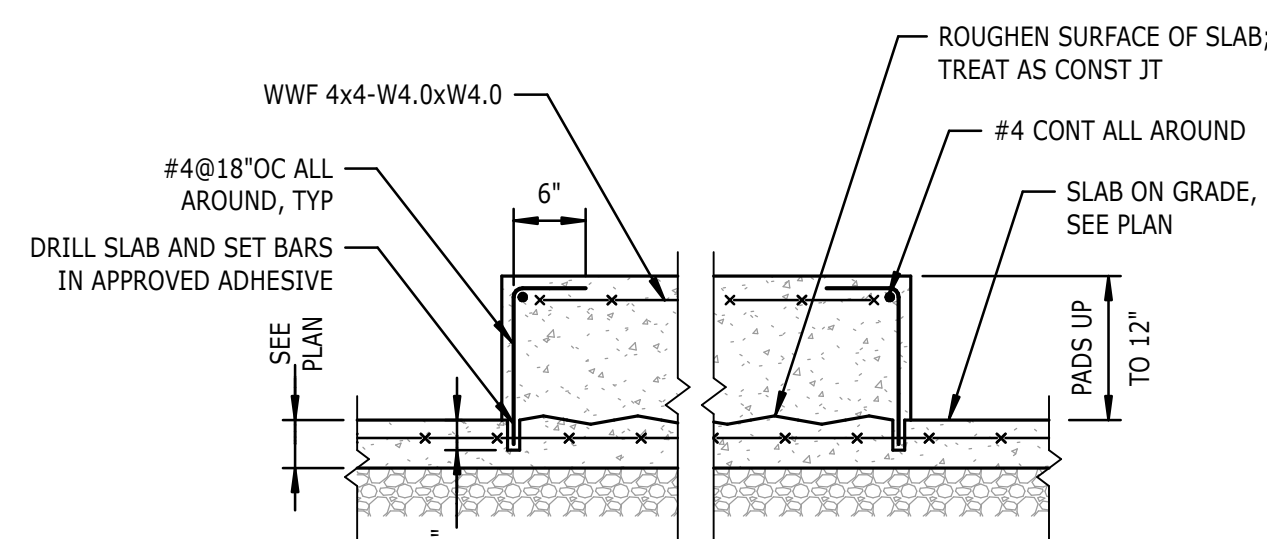
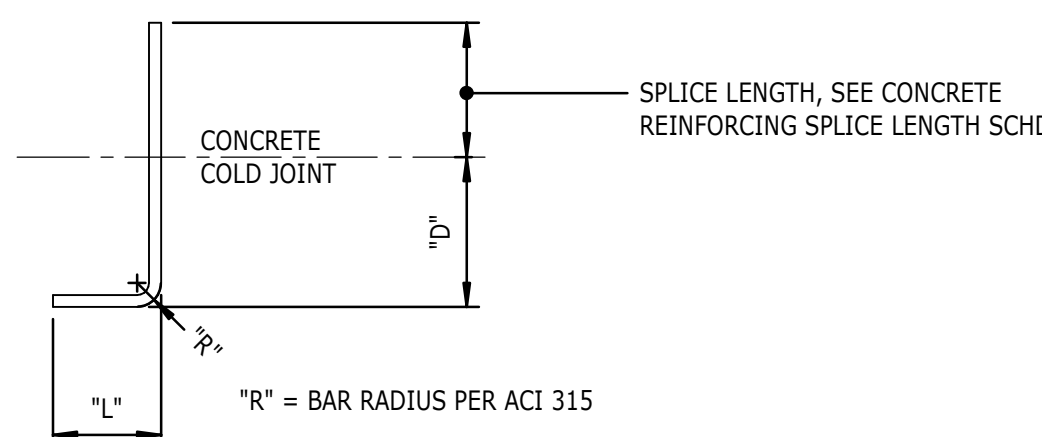
S301 1" = 1'-0"

CONCRETE REINFORCING DOWEL EMBEDMENT				
BAR SIZE	LEG DIM, "L"	EMBEDMENT, "D"		
		f _c = 3,000 PSI	f _c = 4,000 PSI	f _c = 5,000 PSI
#3	6"	6"	6"	6"
#4	8"	8"	7"	6"
#5	10"	10"	9"	8"
#6	12"	12"	10"	9"
#7	14"	14"	12"	11"
#8	16"	16"	14"	12"
#9	19"	18"	15"	14"
#10	22"	20"	17"	15"
#11	24"	22"	19"	17"

- NOTES:
1. FOR CONCRETE STRENGTHS NOT PROVIDED, USE THE EMBEDMENT LENGTH FOR THE LOWER CONCRETE STRENGTH AS SHOWN IN THE TABLE.
 2. DOWEL LENGTHS BASED ON NORMAL WEIGHT CONCRETE. FOR LIGHT WEIGHT, INCREASE DOWEL LENGTH "D" BY 30%.
 3. SIDE COVER ON BARS MUST BE GREATER THAN 2 1/2". END COVER ON 90° HOOKED BARS MUST BE GREATER THAN 2".
 4. FOR EPOXY-COATED BARS, INCREASE THE DOWEL LENGTH "D" BY 20%.

14 EMBEDMENT DOWEL LENGTH SCHEDULE

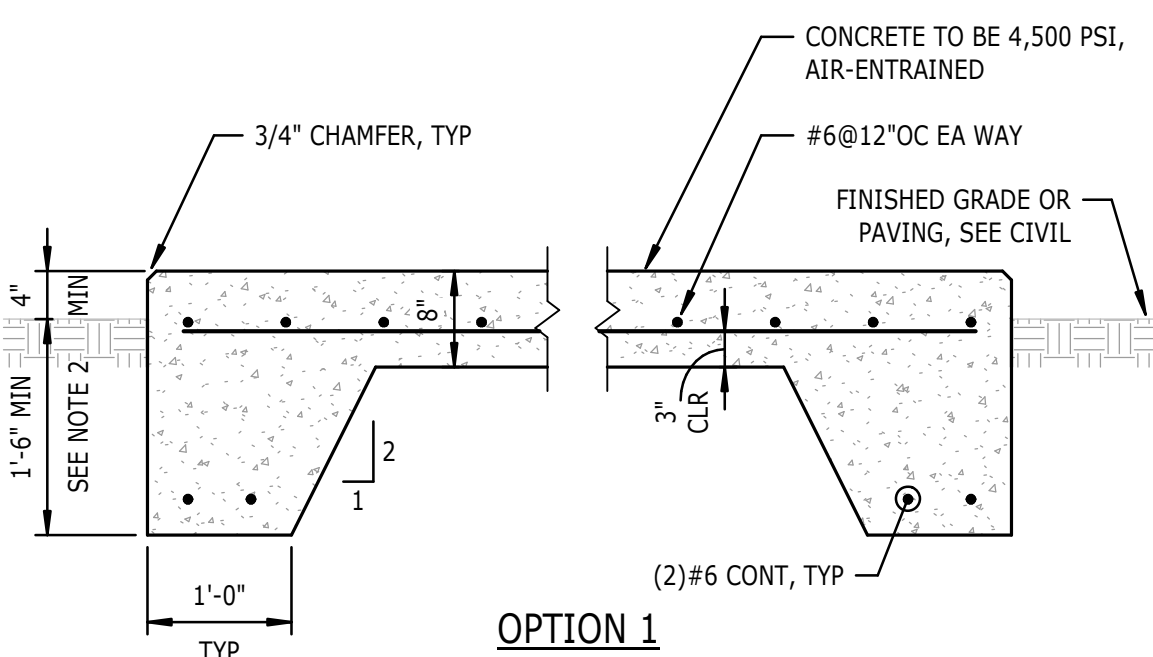
S301 3/4" = 1'-0"



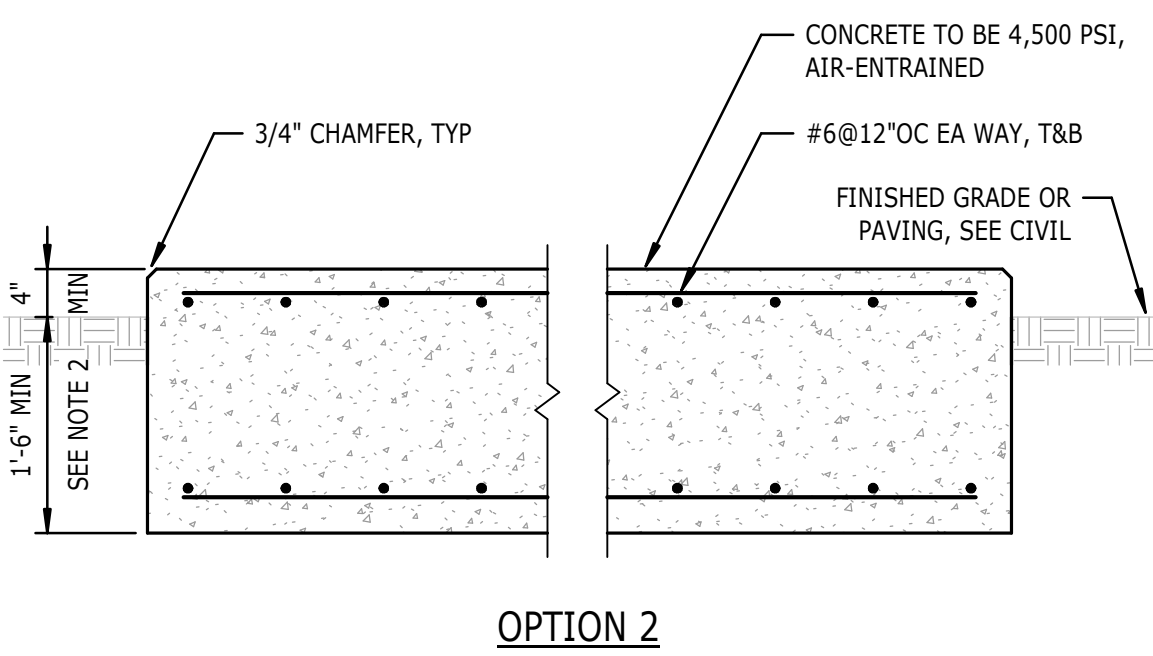
- NOTES:
1. THE EXACT SIZE, SHAPE, AND LOCATION OF EQUIPMENT (HOUSEKEEPING) PAD(S) SHALL BE DETERMINED BY THE CONTRACTOR AFTER APPROVAL OF EQUIPMENT SHOP DRAWINGS. ANCHOR BOLTS WHERE REQUIRED SHALL BE SIZED AND LOCATED ACCORDING TO MANUFACTURER'S REQUIREMENTS.

10 TYPICAL EQUIPMENT PAD

S301 3/4" = 1'-0"



OPTION 1

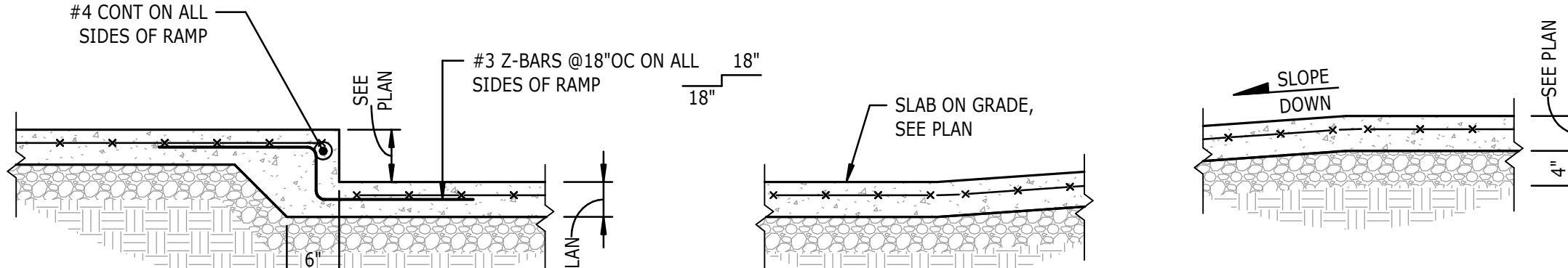


OPTION 2

- NOTES:
1. THE EXACT SIZE, SHAPE, AND LOCATION OF EQUIPMENT PADS SHALL BE DETERMINED BY THE CONTRACTOR AFTER APPROVAL OF EQUIPMENT SHOP DRAWINGS. ANCHOR BOLTS WHERE REQUIRED SHALL BE SIZED AND LOCATED ACCORDING TO MANUFACTURER'S REQUIREMENTS.
 2. INCREASE DEPTH AS REQUIRED BY THE GEOTECHNICAL REPORT FOR AREA-SPECIFIC FREEZE-THAW DEPTHS.

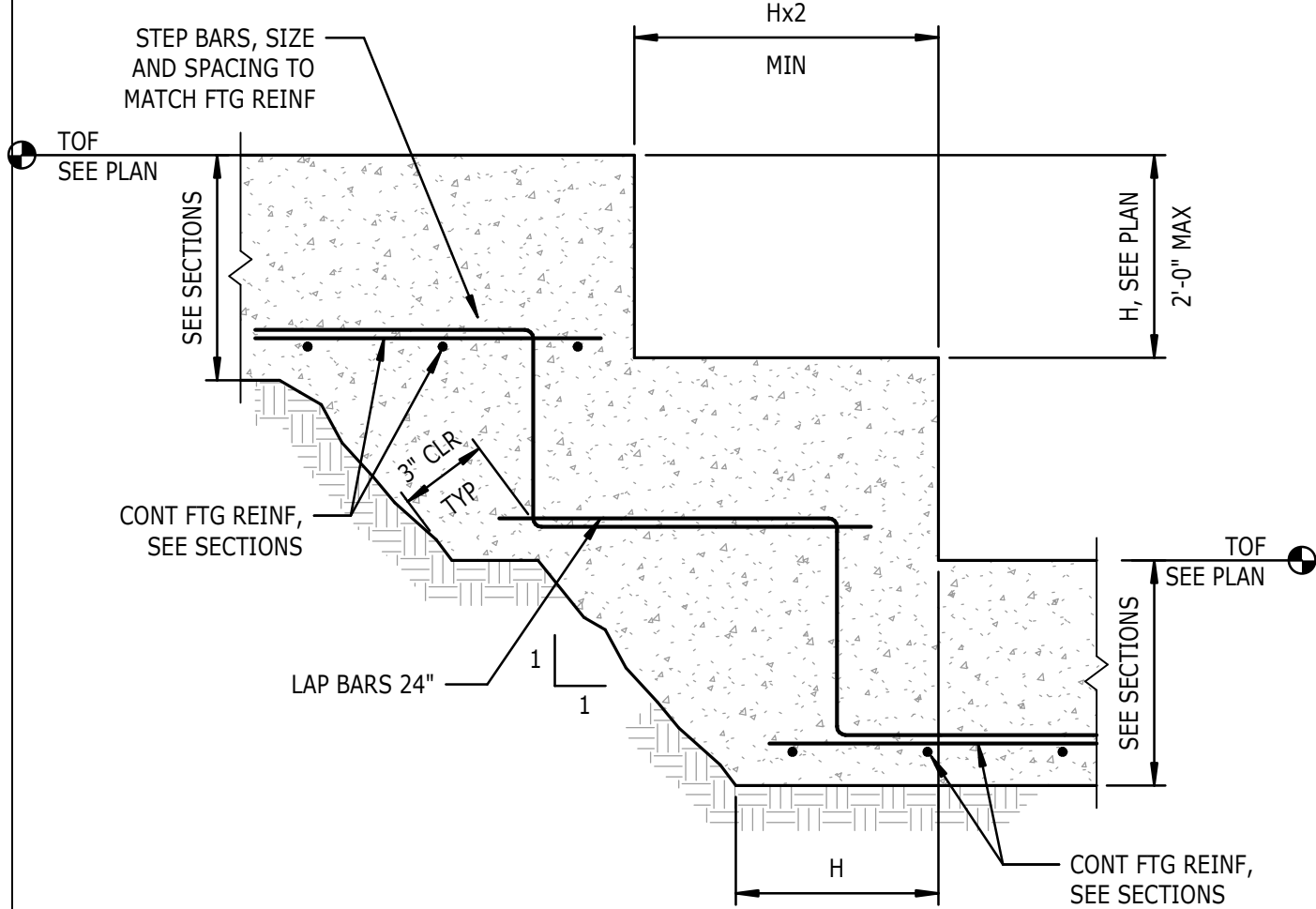
19 TYPICAL EXTERIOR EQUIPMENT PAD

S301 3/4" = 1'-0"



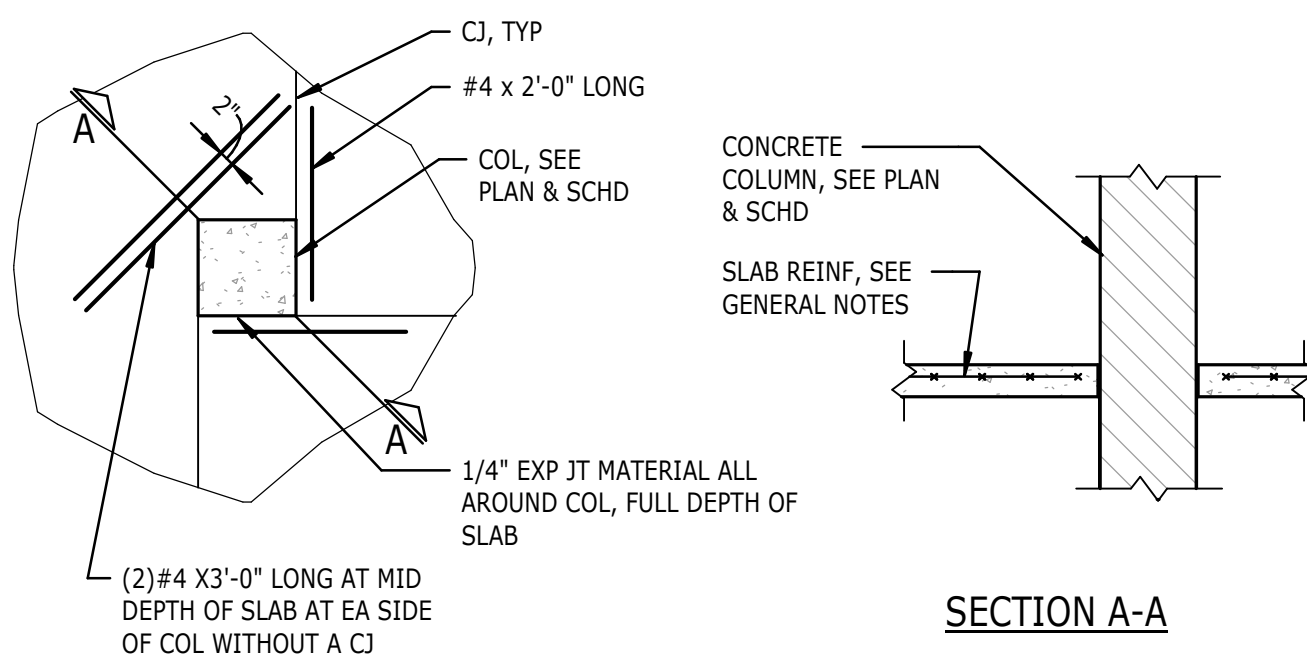
11 TYPICAL RAMP ON GRADE

S301 3/4" = 1'-0"



16 TYPICAL STEP IN WALL FOOTING

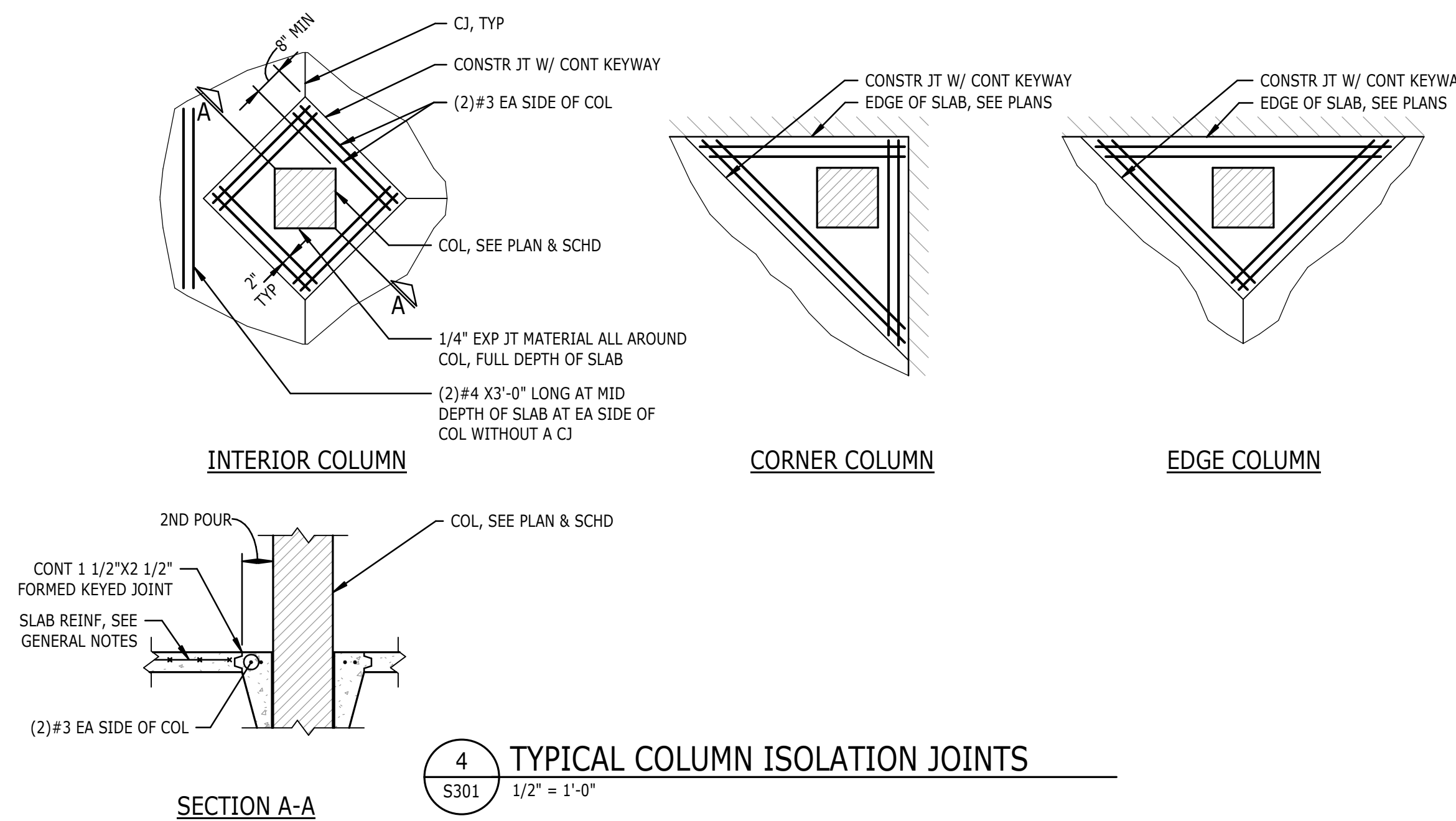
S301 3/4" = 1'-0"



INTERIOR COLUMN

12 COLUMN ISOLATION JOINTS, CONC COLUMNS

S301 1/2" = 1'-0"



INTERIOR COLUMN

CORNER COLUMN

EDGE COLUMN

4 TYPICAL COLUMN ISOLATION JOINTS

S301 1/2" = 1'-0"



STEWART
101 N TRYON ST
SUITE 1400
CHARLOTTE, NC 28202
T 704 334 7925
FIRM LICENSE # C-1051
S19191

SAMPSON COUNTY 911 & ES FACILITIES

CLINTON, NORTH CAROLINA

SLAB ON GRADE DETAILS

DATE: 12.04.2020
PROJECT NO: 20003

REVISIONS

NO: 1 DATE: 12-17-2020 DESCRIPTION: Revision 1

THIS DRAWING IS THE PROPERTY OF ADW ARCHITECTS, P.A. AND SHALL NOT BE REPRODUCED OR COPIED IN WHOLE OR PART. IT SHALL NOT BE USED ON ANY OTHER PROJECT OR GIVEN TO ANY OTHER COMPANY OR AGENCY WITHOUT THE CONSENT OF ADW ARCHITECTS, P.A.



SHEET NUMBER

S301